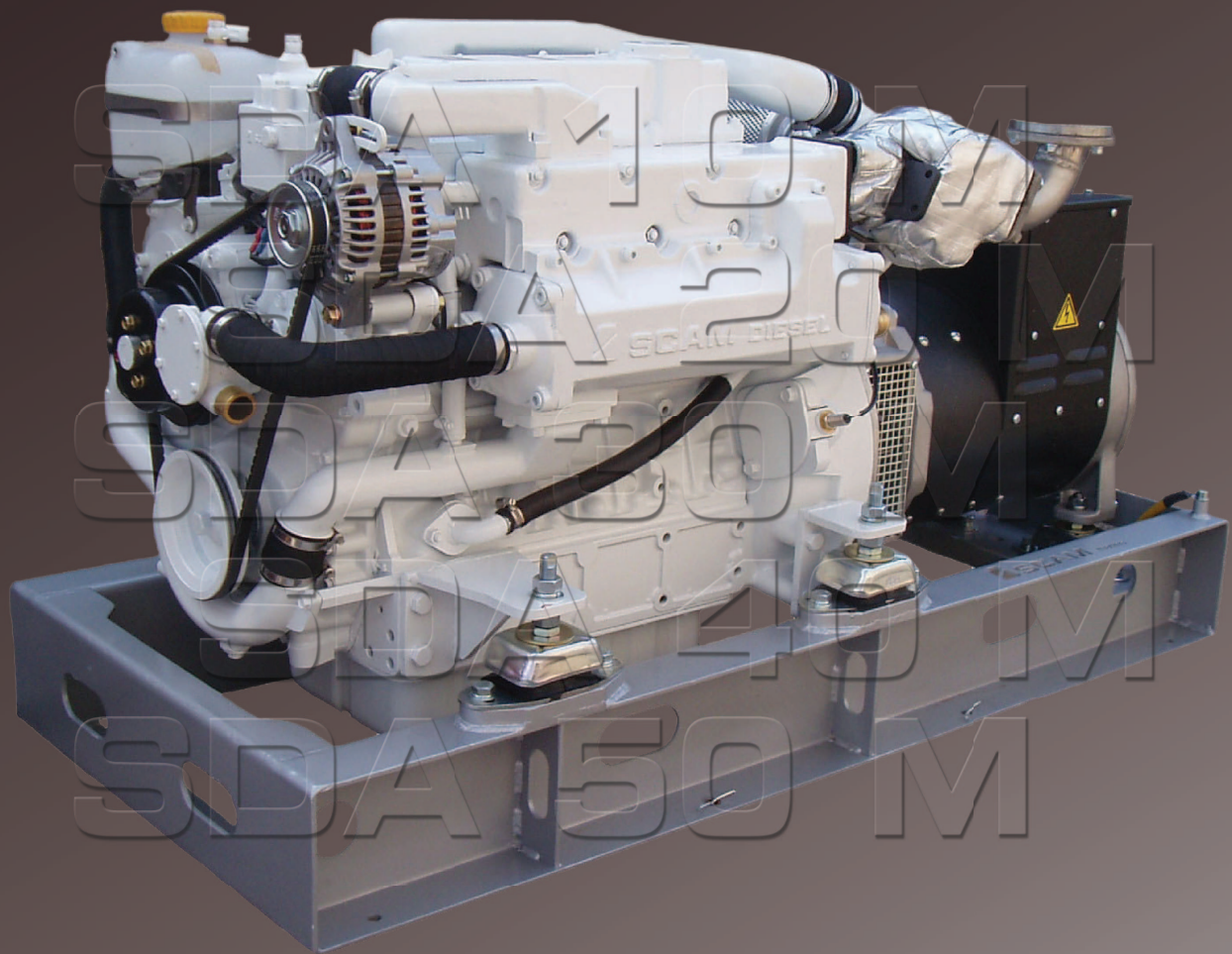




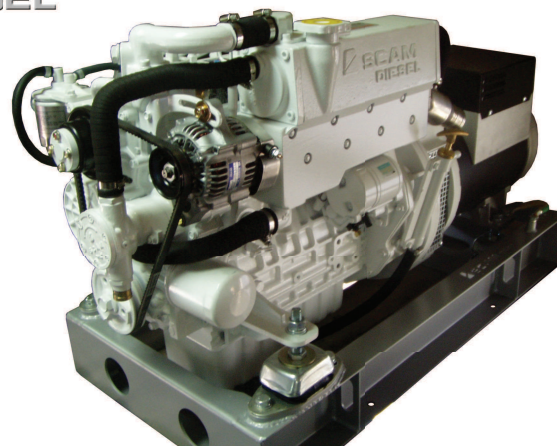
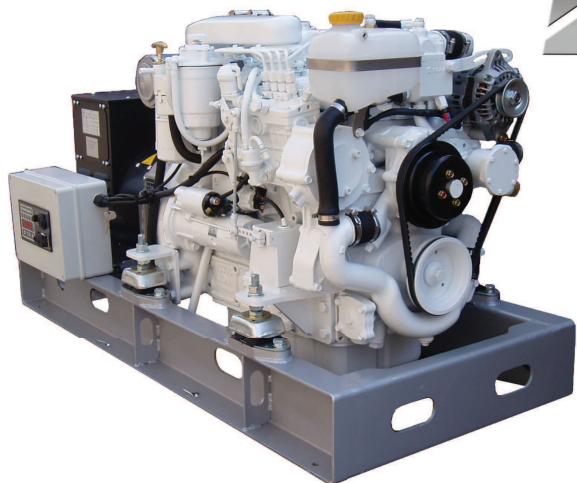
MARINE GENERATORS



SCAM
DIESEL



MARINE GENERATORS - base KUBOTA



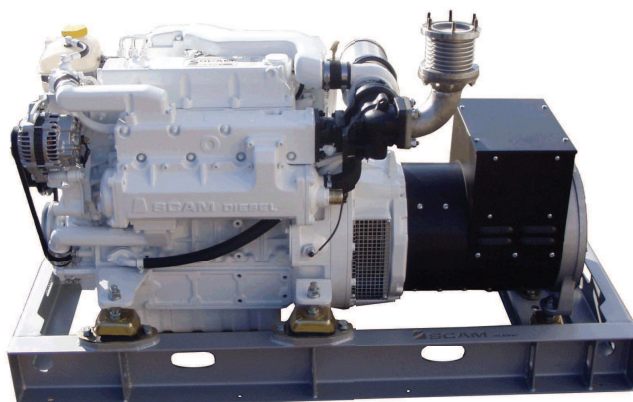
TECHNICAL FEATURES - monophase

GENSET model	Power max		Voltage V	Frequency Hz	Dimensions			Weight kg
	Continuous	Stand by			Length mm	Width mm	Height mm	
	kVA / kW	kVA / kW						
SDA 5,5/3 M	5,5 / 5,5	6 / 6	230	50	900	420	570	155
SDA 8/3 M	8 / 8	8,8 / 8,8	230	50	950	420	570	185
SDA 7,5 M	7,5 / 7,5	8,3 / 8,3	230	50	1120	540	620	240
SDA 9 M	9 / 9	10 / 10	230	50	1200	540	680	270
SDA 16,5 M	16,5 / 16,5	18 / 18	230	50	1250	540	750	395
SDA 19 M	19 / 19	21 / 21	230	50	1350	650	800	480
SDA 24 M	24 / 24	26,4 / 26,4	230	50	1400	650	800	540
SDA 27 M	27 / 27	30 / 30	230	50	1400	650	800	570
SDA 33 M	33 / 33	37 / 37	230	50	1550	650	800	610
SDA 45 M	45 / 45	49 / 49	230	50	1550	650	800	680

GENSET model	Engine model	Power max	Speed	No cylind	Bore / Stroke	Cylinders displac	Air Intake	Alternator model
		kW	rpm		mm	cm ³		
SDA 5,5/3 M	SD 212	6,9	3000	2, L	67 / 68	479	NA	ECP3-1S/2
SDA 8/3 M	SD 318	10,2	3000	3, L	67 / 68	719	NA	ECP3-3S/2
SDA 7,5 M	SD 325	8,4	1500	3, L	78 / 78,4	1123	NA	ECP3-1L/4
SDA 9 M	SD 434	11,1	1500	4, L	78 / 78,4	1498	NA	ECP3-2L/4
SDA 16,5 M	SD 450	18,8	1500	4, L	87 / 102,4	2434	NA	ECP28-2L/4
SDA 19 M	SD 470	25	1500	4, L	98 / 110	3318	NA	ECP28-VL/4
SDA 24 M	SD 467	26,3	1500	4, L	98 / 120	3620	NA	ECO32-2S/4
SDA 27 M	SD 485 T	32,1	1500	4, L	98 / 120	3620	T	ECO32-3S/4
SDA 33 M	SD 4.100 T	41	1500	4, L	100 / 120	3769	T	ECO32-1L/4
SDA 45 M	SD 4.140 TIC	56	1500	4, L	100 / 120	3769	TIC	ECO32-3L/4



MARINE GENERATORS - base KUBOTA



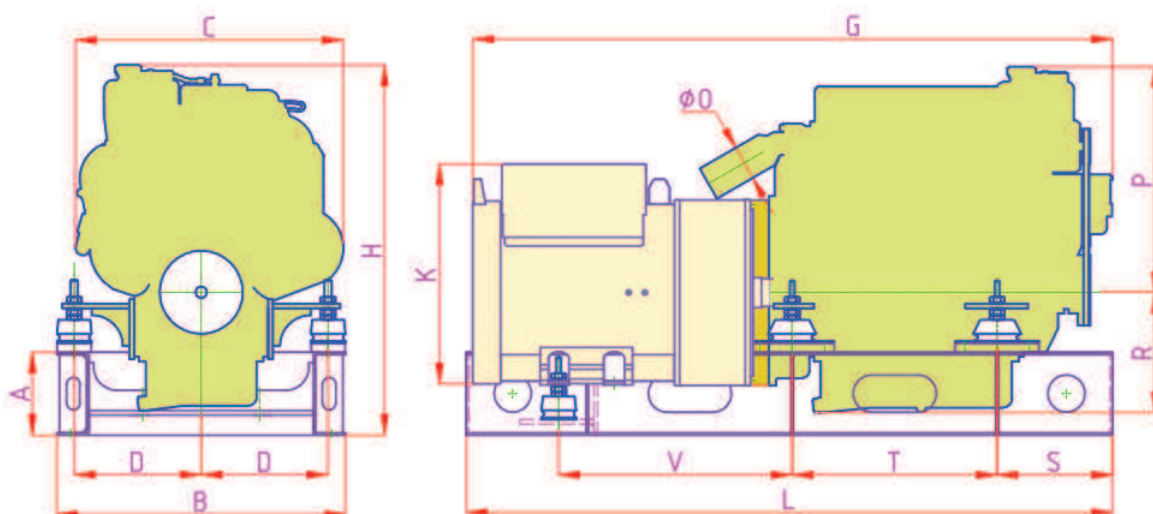
TECHNICAL FEATURES - threephase

GENSET model	Power max		Voltage V	Frequency Hz	Dimensions			Weight kg
	Continuous	Stand by			Length mm	Width mm	Height mm	
	kVA / kW	kVA / kW						
SDA 10 M	10 / 8	11,2 / 9	400/230	50	1120	540	620	240
SDA 14 M	13,5 / 10,8	14,5 / 11,6	400/230	50	1200	540	680	270
SDA 20 M	20 / 16	22 / 17,6	400/230	50	1200	540	750	380
SDA 25 M	25 / 20	28 / 22,4	400/230	50	1350	650	800	460
SDA 30 M	30 / 24	33 / 26,4	400/230	50	1350	650	800	500
SDA 35 M	35 / 28	38 / 31	400/230	50	1400	650	800	550
SDA 40 M	40 / 32	44 / 35	400/230	50	1400	650	800	570
SDA 50 M	50 / 40	55 / 44	400/230	50	1550	650	800	630

GENSET model	Engine model	Power max	Speed	No cylind	Bore / Stroke	Cylinders displac	Air Intake	Alternator model
		kW	rpm		mm	cm ³		
SDA 10 M	SD 325	8,4	1500	3, L	78 / 78,4	1123	NA	ECP3-1L/4
SDA 14 M	SD 434	11,1	1500	4, L	78 / 78,4	1498	NA	ECP3-2L/4
SDA 20 M	SD 450	18,8	1500	4, L	87 / 102,4	2434	NA	ECP28-M/4
SDA 25 M	SD 470	25	1500	4, L	98 / 110	3318	NA	ECP28-2L/4
SDA 30 M	SD 467	26,3	1500	4, L	98 / 120	3620	NA	ECP28-VL/4
SDA 35 M	SD 485 T	32,1	1500	4, L	98 / 120	3620	T	ECO32-2S/4
SDA 40 M	SD 4.100 T	41	1500	4, L	100 / 120	3769	T	ECO32-3S/4
SDA 50 M	SD 4.140 TIC	56	1500	4, L	100 / 120	3769	TIC	ECO32-1L/4



MARINE GENERATORS - base KUBOTA



DIMENSIONS - monophase

Model	Dimension, mm													
	A	B	C	D	G	H	K	L	O	P	R	S	T	V
SDA 5,5/3 M	120	420	380	165	875	570	310	900	45	360	160	135	295	350
SDA 8/3 M	120	420	380	165	955	570	310	950	45	360	160	135	370	350
SDA 7,5 M	160	540	420	225	1115	620	310	1120	45	380	190	220	335	460
SDA 9 M	200	540	420	225	1200	680	310	1200	45	380	250	210	420	480
SDA 16,5 M	200	540	500	233	1225	750	410	1250	60	410	290	190	407	370
SDA 19 M	200	650	540	275	1355	800	410	1350	75	490	260	260	445	470
SDA 24 M	200	650	540	275	1400	800	480	1400	75	490	260	260	445	510
SDA 27 M	200	650	540	275	1400	800	480	1400	90	490	260	260	445	510
SDA 33 M	200	650	580	275	1525	800	480	1550	90	490	260	260	445	510
SDA 45 M	200	650	580	275	1550	800	480	1550	90	490	260	260	445	510

DIMENSIONS - threephase

Model	Dimension, mm													
	A	B	C	D	G	H	K	L	O	P	R	S	T	V
SDA 10 M	160	540	420	225	1115	620	310	1120	45	380	190	220	335	460
SDA 14 M	200	540	420	225	1200	680	310	1200	45	380	250	210	420	480
SDA 20 M	200	540	500	233	1180	750	410	1200	60	410	290	190	407	370
SDA 25 M	200	650	540	275	1325	800	410	1350	75	490	260	260	445	470
SDA 30 M	200	650	540	275	1355	800	410	1350	75	490	260	260	445	470
SDA 35 M	200	650	540	275	1400	800	480	1400	90	490	260	260	445	510
SDA 40 M	200	650	580	275	1400	800	480	1400	90	490	260	260	445	510
SDA 50 M	200	650	580	275	1550	800	480	1550	90	490	260	275	445	510